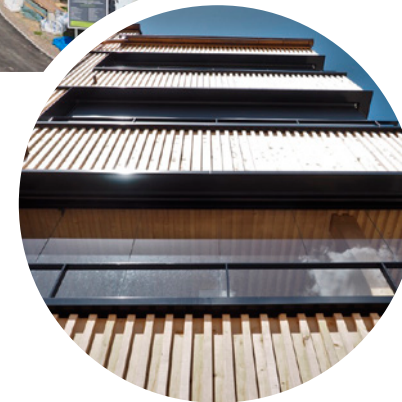


VÖGELINSEGG HOUSING DEVELOPMENT | SPEICHER

WOOD CONSTRUCTION



Timber contractor

Blumer-Lehmann AG
Erlenhof, 9200 Gossau

Architect

Hubert Bischoff, Architekt BSA
Plätzli 468, 9427 Wolfhalden

Year of construction

2016-2017

Planning contract

Engineering work for timber construction in the SIA phases
• 32 Construction project

- 51 Execution projekt
- 52 Execution

Project description

The three multi-family houses with a total of 29 residential units have been designed entirely as timber constructions. The building shell consists of a standardized timber frame construction and a wooden facade cladding. All floor slabs were designed with a wood-concrete composite system. The staircase and lift shaft consist of cross-laminated timber panels and a second supporting shell for the vertical load transfer of the floor slabs. Here a modern timber construction was created that meets all requirements.



WIR GESTALTEN RÄUME
FÜR MENSCH + NATUR

TIEFBAU

LANDSCHAFTS-
ARCHITEKTUR

HOLZBAU

MASSIVBAU

BRANDSCHUTZ

